

Heavy menstrual bleeding overview

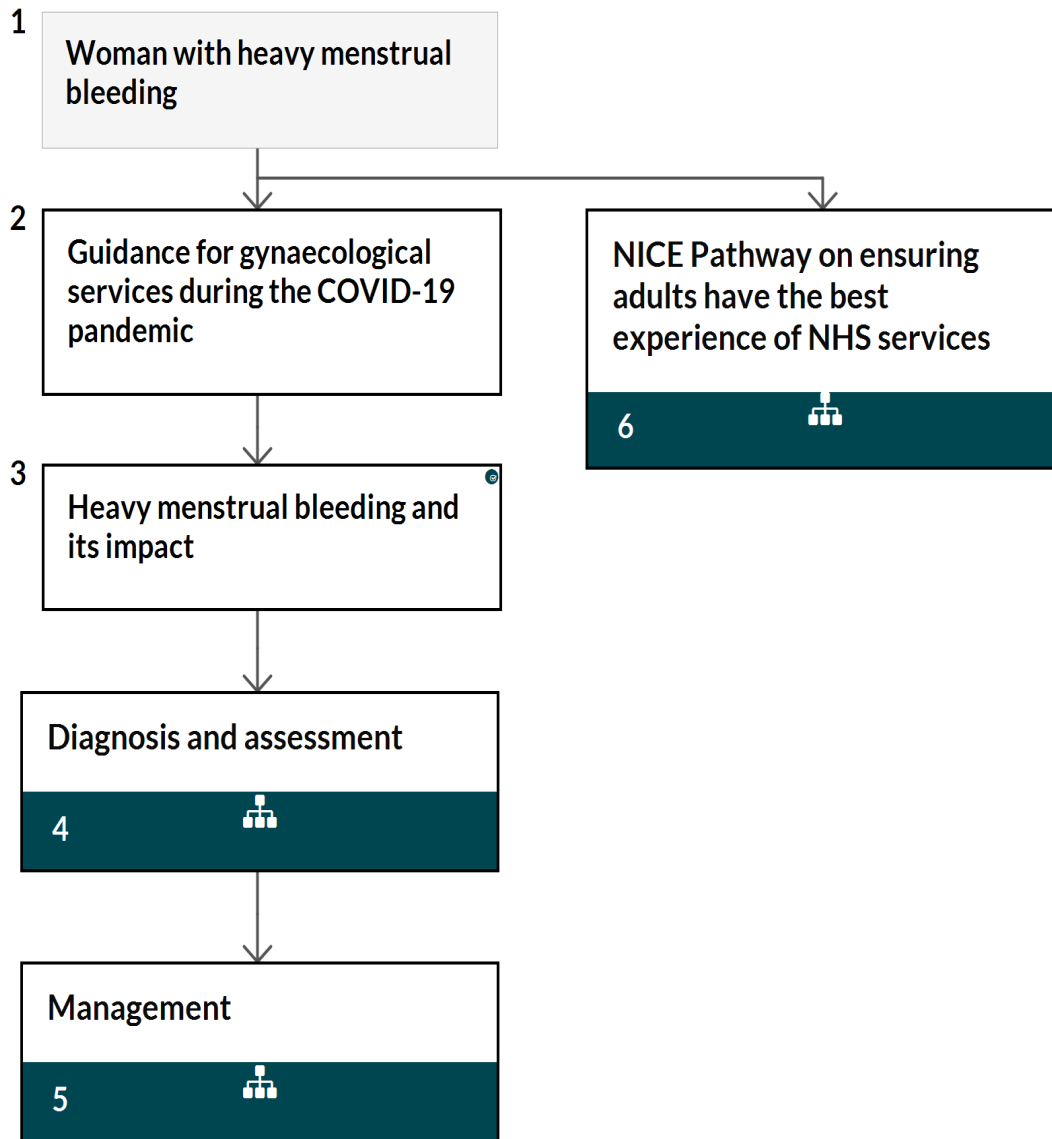
NICE Pathways bring together everything NICE says on a topic in an interactive flowchart. NICE Pathways are interactive and designed to be used online.

They are updated regularly as new NICE guidance is published. To view the latest version of this NICE Pathway see:

<http://pathways.nice.org.uk/pathways/heavy-menstrual-bleeding>

NICE Pathway last updated: 16 October 2020

This document contains a single flowchart and uses numbering to link the boxes to the associated recommendations.



1 Woman with heavy menstrual bleeding

No additional information

2 Guidance for gynaecological services during the COVID-19 pandemic

The [Royal College of Obstetricians and Gynaecologists](#) has produced [guidance for gynaecological services during the COVID-19 pandemic](#).

3 Heavy menstrual bleeding and its impact

Recognise that heavy menstrual bleeding has a major impact on a woman's quality of life, and ensure that any intervention aims to improve this rather than focusing on blood loss.

Provide women with information about heavy menstrual bleeding and its management. Follow the principles in [the NICE Pathway on patient experience in adult NHS services](#) in relation to communication, information and shared decision-making.

NICE has written [information for the public on heavy menstrual bleeding](#).

Quality standards

The following quality statement is relevant to this part of the interactive flowchart.

3. Discussing treatment options

4 Diagnosis and assessment

[See Heavy menstrual bleeding / Diagnosing and assessing heavy menstrual bleeding](#)

5 Management

[See Heavy menstrual bleeding / Managing heavy menstrual bleeding](#)

6 NICE Pathway on ensuring adults have the best experience of NHS

services

[See Patient experience in adult NHS services](#)

Sources

Heavy menstrual bleeding: assessment and management (2018, updated 2020) NICE guideline NG88

Your responsibility

Guidelines

The recommendations in this guideline represent the view of NICE, arrived at after careful consideration of the evidence available. When exercising their judgement, professionals and practitioners are expected to take this guideline fully into account, alongside the individual needs, preferences and values of their patients or the people using their service. It is not mandatory to apply the recommendations, and the guideline does not override the responsibility to make decisions appropriate to the circumstances of the individual, in consultation with them and their families and carers or guardian.

Local commissioners and providers of healthcare have a responsibility to enable the guideline to be applied when individual professionals and people using services wish to use it. They should do so in the context of local and national priorities for funding and developing services, and in light of their duties to have due regard to the need to eliminate unlawful discrimination, to advance equality of opportunity and to reduce health inequalities. Nothing in this guideline should be interpreted in a way that would be inconsistent with complying with those duties.

Commissioners and providers have a responsibility to promote an environmentally sustainable health and care system and should assess and reduce the environmental impact of implementing NICE recommendations wherever possible.

Technology appraisals

The recommendations in this interactive flowchart represent the view of NICE, arrived at after careful consideration of the evidence available. When exercising their judgement, health professionals are expected to take these recommendations fully into account, alongside the individual needs, preferences and values of their patients. The application of the

recommendations in this interactive flowchart is at the discretion of health professionals and their individual patients and do not override the responsibility of healthcare professionals to make decisions appropriate to the circumstances of the individual patient, in consultation with the patient and/or their carer or guardian.

Commissioners and/or providers have a responsibility to provide the funding required to enable the recommendations to be applied when individual health professionals and their patients wish to use it, in accordance with the NHS Constitution. They should do so in light of their duties to have due regard to the need to eliminate unlawful discrimination, to advance equality of opportunity and to reduce health inequalities.

Commissioners and providers have a responsibility to promote an environmentally sustainable health and care system and should assess and reduce the environmental impact of implementing NICE recommendations wherever possible.

Medical technologies guidance, diagnostics guidance and interventional procedures guidance

The recommendations in this interactive flowchart represent the view of NICE, arrived at after careful consideration of the evidence available. When exercising their judgement, healthcare professionals are expected to take these recommendations fully into account. However, the interactive flowchart does not override the individual responsibility of healthcare professionals to make decisions appropriate to the circumstances of the individual patient, in consultation with the patient and/or guardian or carer.

Commissioners and/or providers have a responsibility to implement the recommendations, in their local context, in light of their duties to have due regard to the need to eliminate unlawful discrimination, advance equality of opportunity, and foster good relations. Nothing in this interactive flowchart should be interpreted in a way that would be inconsistent with compliance with those duties.

Commissioners and providers have a responsibility to promote an environmentally sustainable health and care system and should assess and reduce the environmental impact of implementing NICE recommendations wherever possible.