

Ovarian cancer overview

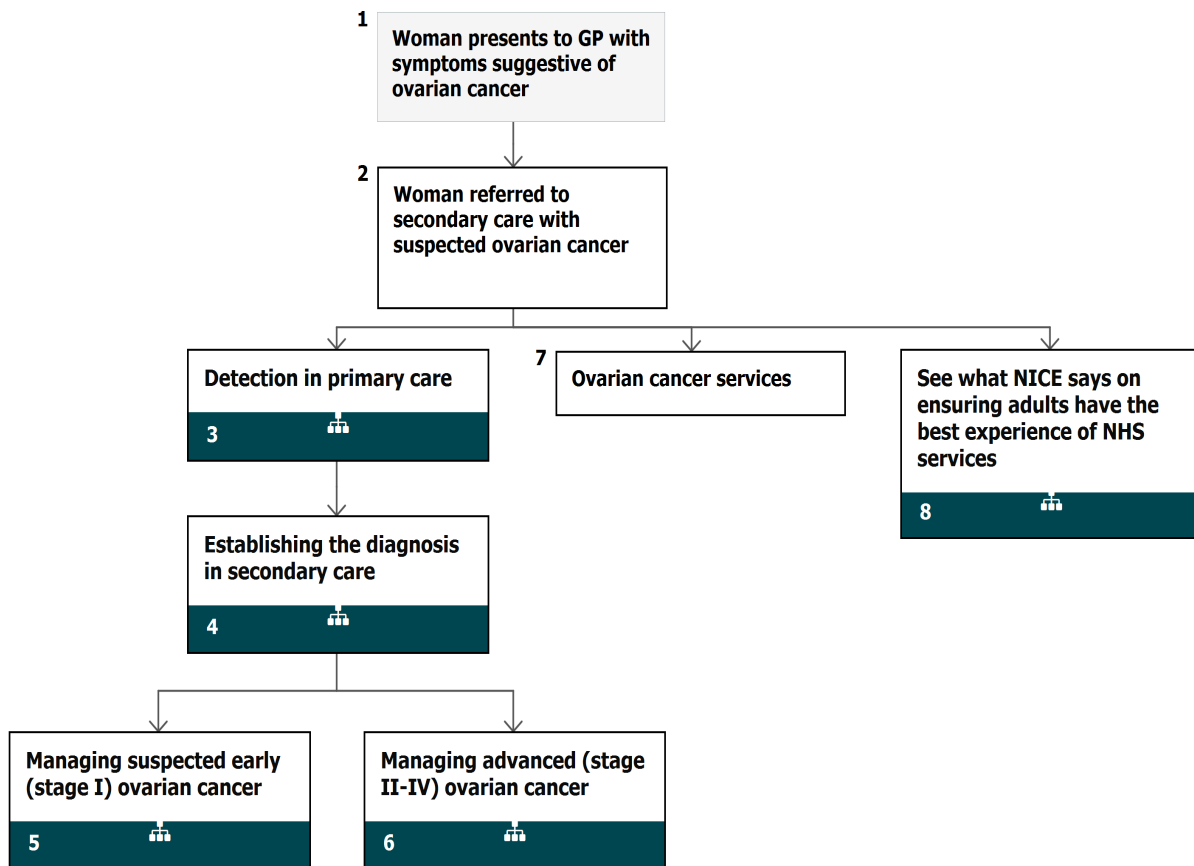
NICE Pathways bring together everything NICE says on a topic in an interactive flowchart. NICE Pathways are interactive and designed to be used online.

They are updated regularly as new NICE guidance is published. To view the latest version of this NICE Pathway see:

<http://pathways.nice.org.uk/pathways/ovarian-cancer>

NICE Pathway last updated: 19 February 2019

This document contains a single flowchart and uses numbering to link the boxes to the associated recommendations.



1 Woman presents to GP with symptoms suggestive of ovarian cancer

No additional information

2 Woman referred to secondary care with suspected ovarian cancer

See what NICE says on recognition and referral from primary to secondary care for suspected [ovarian cancer](#).

3 Detection in primary care

See [Ovarian cancer / Ovarian cancer: detection in primary care](#)

4 Establishing the diagnosis in secondary care

See [Ovarian cancer / Ovarian cancer: establishing the diagnosis in secondary care](#)

5 Managing suspected early (stage I) ovarian cancer

See [Ovarian cancer / Managing suspected early \(stage I\) ovarian cancer](#)

6 Managing advanced (stage II-IV) ovarian cancer

See [Ovarian cancer / Managing advanced \(stage II-IV\) ovarian cancer](#)

7 Ovarian cancer services

Cancer service guidelines have been published by the Department of Health on [improving outcomes in gynaecological cancers](#), and by NICE on [improving supportive and palliative care for adults with cancer](#).

8 See what NICE says on ensuring adults have the best experience of NHS services

[See Patient experience in adult NHS services](#)

AFP

alpha fetoprotein

beta-hCG

beta human chorionic gonadotrophin

MDT

multidisciplinary team

PLDH

pegylated liposomal doxorubicin hydrochloride

RMI I

risk of malignancy index I

VEGF

vascular endothelial growth factor

urgently

(An urgent referral means that the woman is referred to a gynaecological cancer service within the national target in England and Wales for referral for suspected cancer, which is currently 2 weeks.)

Your responsibility**Guidelines**

The recommendations in this guideline represent the view of NICE, arrived at after careful consideration of the evidence available. When exercising their judgement, professionals and practitioners are expected to take this guideline fully into account, alongside the individual

needs, preferences and values of their patients or the people using their service. It is not mandatory to apply the recommendations, and the guideline does not override the responsibility to make decisions appropriate to the circumstances of the individual, in consultation with them and their families and carers or guardian.

Local commissioners and providers of healthcare have a responsibility to enable the guideline to be applied when individual professionals and people using services wish to use it. They should do so in the context of local and national priorities for funding and developing services, and in light of their duties to have due regard to the need to eliminate unlawful discrimination, to advance equality of opportunity and to reduce health inequalities. Nothing in this guideline should be interpreted in a way that would be inconsistent with complying with those duties.

Commissioners and providers have a responsibility to promote an environmentally sustainable health and care system and should assess and reduce the environmental impact of implementing NICE recommendations wherever possible.

Technology appraisals

The recommendations in this interactive flowchart represent the view of NICE, arrived at after careful consideration of the evidence available. When exercising their judgement, health professionals are expected to take these recommendations fully into account, alongside the individual needs, preferences and values of their patients. The application of the recommendations in this interactive flowchart is at the discretion of health professionals and their individual patients and do not override the responsibility of healthcare professionals to make decisions appropriate to the circumstances of the individual patient, in consultation with the patient and/or their carer or guardian.

Commissioners and/or providers have a responsibility to provide the funding required to enable the recommendations to be applied when individual health professionals and their patients wish to use it, in accordance with the NHS Constitution. They should do so in light of their duties to have due regard to the need to eliminate unlawful discrimination, to advance equality of opportunity and to reduce health inequalities.

Commissioners and providers have a responsibility to promote an environmentally sustainable health and care system and should assess and reduce the environmental impact of implementing NICE recommendations wherever possible.

Medical technologies guidance, diagnostics guidance and interventional procedures guidance

The recommendations in this interactive flowchart represent the view of NICE, arrived at after careful consideration of the evidence available. When exercising their judgement, healthcare professionals are expected to take these recommendations fully into account. However, the interactive flowchart does not override the individual responsibility of healthcare professionals to make decisions appropriate to the circumstances of the individual patient, in consultation with the patient and/or guardian or carer.

Commissioners and/or providers have a responsibility to implement the recommendations, in their local context, in light of their duties to have due regard to the need to eliminate unlawful discrimination, advance equality of opportunity, and foster good relations. Nothing in this interactive flowchart should be interpreted in a way that would be inconsistent with compliance with those duties.

Commissioners and providers have a responsibility to promote an environmentally sustainable health and care system and should assess and reduce the environmental impact of implementing NICE recommendations wherever possible.